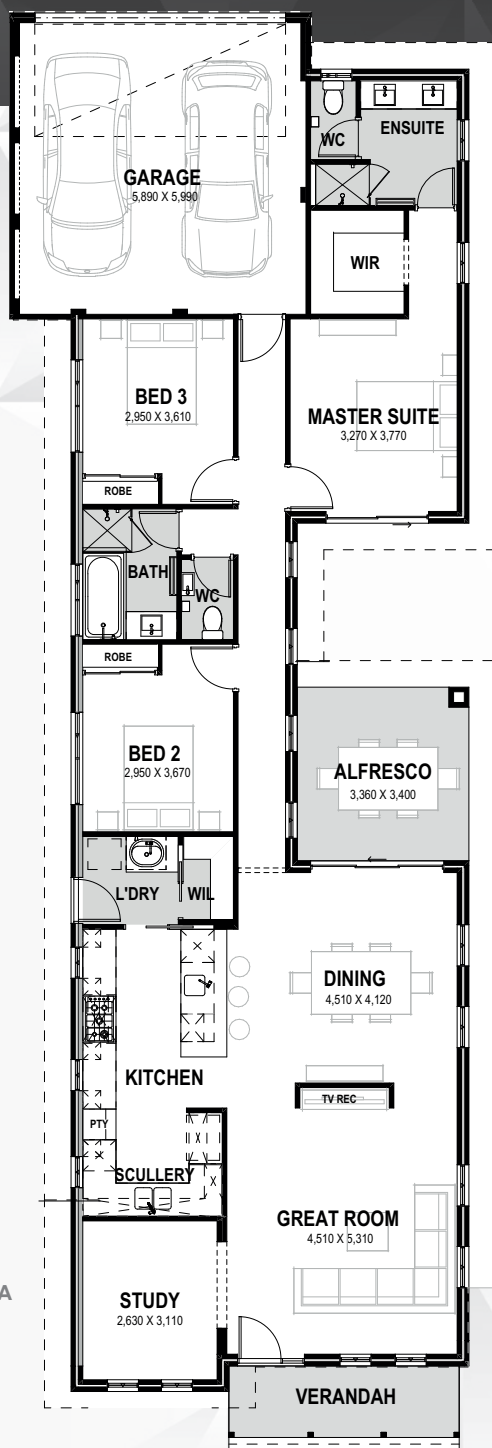


# SEABREEZE

3 2 2 | 10

DIAMOND  
SERIES



Hamptons meets coastal elegance on this narrow cottage lot. The design inspiration for this home originates from it's Fremantle heritage style elevation. It features stylish exterior complimented by a feature gable and verandah.

This 3 by 2 home has features aplenty from the seamless integration of the dining and central alfresco area to the kitchen which is complete with a fully functional scullery.

The Master Bedroom feels like it's own little retreat within the home. It is located at the rear and has been designed with generous storage and spacious Ensuite to suit.

## INCLUSIONS

- ◆ Ducted reverse cycle air conditioning
- ◆ 31c high ceilings to living and alfresco
- ◆ Internal brick wall with drywall lining system
- ◆ Feature recess ceiling to home theatre or master bedroom
- ◆ 1200mm wide front entry door if applicable
- ◆ Silestone benchtops throughout
- ◆ 900mm Bosch or Ilve kitchen appliances
- ◆ Overhead cupboards to kitchen
- ◆ Semi framed shower doors and screen with hobless shower
- ◆ Polished edge slimline frame mirror over vanities
- ◆ Inset trough to laundry
- ◆ NBN structured cabling package and 10 LED downlights



9263 4450 | [endeavourhomes.com.au](http://endeavourhomes.com.au)

*Images for illustration purposes only*

ENDEAVOUR  
HOMES