

MANLY



3



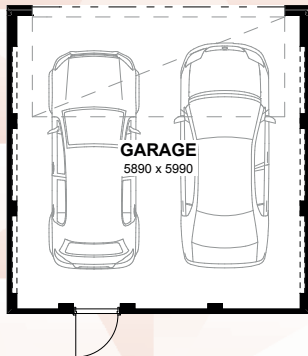
2



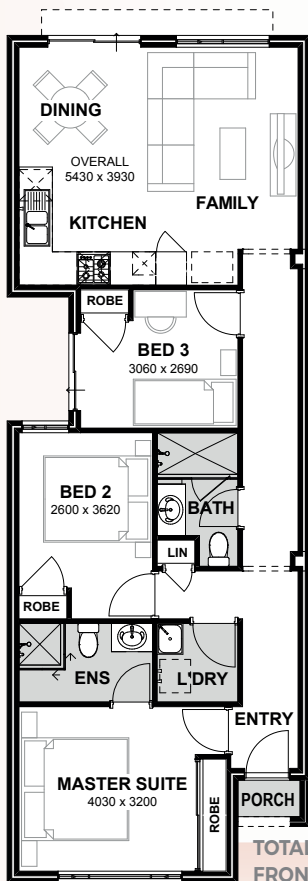
2



6



The Manly features three bedrooms, two bathrooms and incorporates a courtyard and double lock-up garage into the home design.



TOTAL AREA
FRONTAGE

127.97m²
Suits 6m

INCLUSIONS

- ◆ Floor tiles to main living areas
- ◆ Carpets to remaining rooms
- ◆ Venetian or Vertical Blinds
- ◆ 28c ceilings throughout home
- ◆ Internal brick wall with drywall lining system
- ◆ 600mm stainless steel appliances to kitchen including canopy rangehood
- ◆ Soft closing drawers and doors to kitchen and bathrooms
- ◆ Glass shower screen doors
- ◆ 6 star energy efficient heat pump hot water unit
- ◆ NBN 4 point pack - (2 x TV points, 1 x data point and 1 x phone point)



9263 4450 | endeavourhomes.com.au

Images for illustration purposes only

ENDEAVOUR
HOMES