

# OAKOVER



3



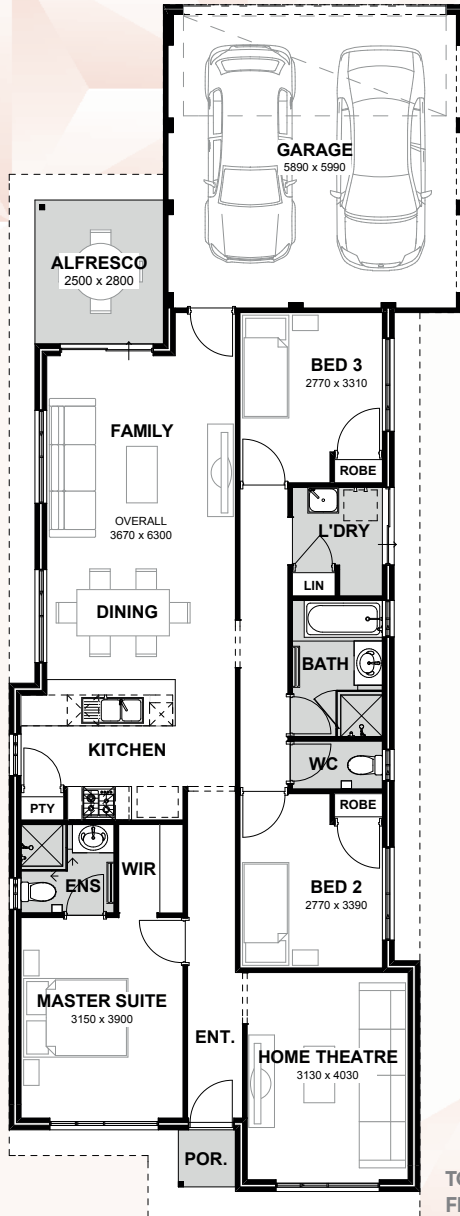
2



2



10

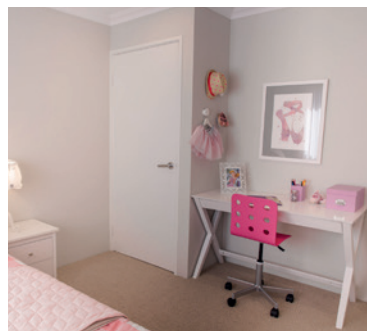


**TOTAL AREA** 163.64m<sup>2</sup>  
**FRONTAGE** Suits 10m

The Oakover provides a three bedroom, two bathroom design to suit a block with rear laneway access. The alfresco will provide year round comfort for creating special memories.

## INCLUSIONS

- ◆ Floor tiles to main living areas
- ◆ Carpets to remaining rooms
- ◆ Venetian or Vertical Blinds
- ◆ 28c ceilings throughout home
- ◆ Internal brick wall with drywall lining system
- ◆ 600mm stainless steel appliances to kitchen including canopy rangehood
- ◆ Soft closing drawers and doors to kitchen and bathrooms
- ◆ Glass shower screen doors
- ◆ 6 star energy efficient heat pump hot water unit
- ◆ NBN 4 point pack - (2 x TV points, 1 x data point and 1 x phone point)



9263 4450 | [endeavourhomes.com.au](http://endeavourhomes.com.au)

Images for illustration purposes only

**ENDEAVOUR** HOMES