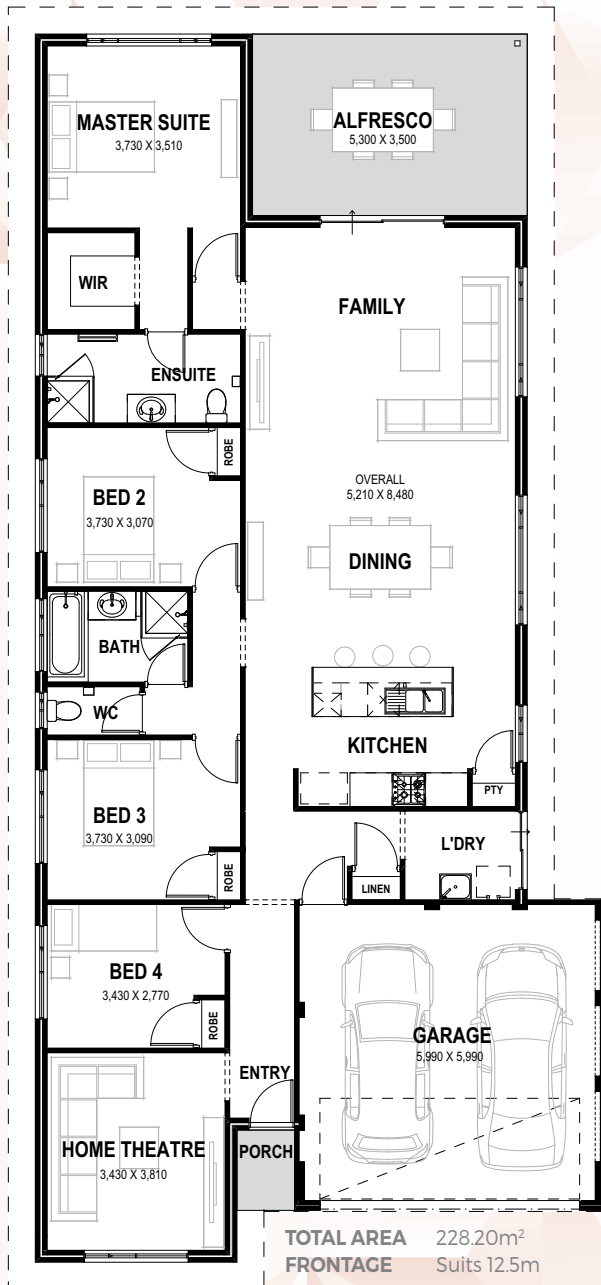


SANTANA 4



The Santana is a well thought out stylish home with four bedrooms, two bathrooms and a theatre room. The central open plan kitchen seamlessly integrates with the dining and family area leading into the alfresco area- perfect for entertaining.

INCLUSIONS

- ◆ Floor tiles to main living areas
- ◆ Carpets to remaining rooms
- ◆ Venetian or Vertical Blinds
- ◆ 28c ceilings throughout home
- ◆ Internal brick wall with drywall lining system
- ◆ 600mm stainless steel appliances to kitchen including canopy rangehood
- ◆ Soft closing drawers and doors to kitchen and bathrooms
- ◆ Glass shower screen doors
- ◆ 6 star energy efficient heat pump hot water unit
- ◆ NBN 4 point pack - (2 x TV points, 1 x data point and 1 x phone point)

