

SANTANA



3



2

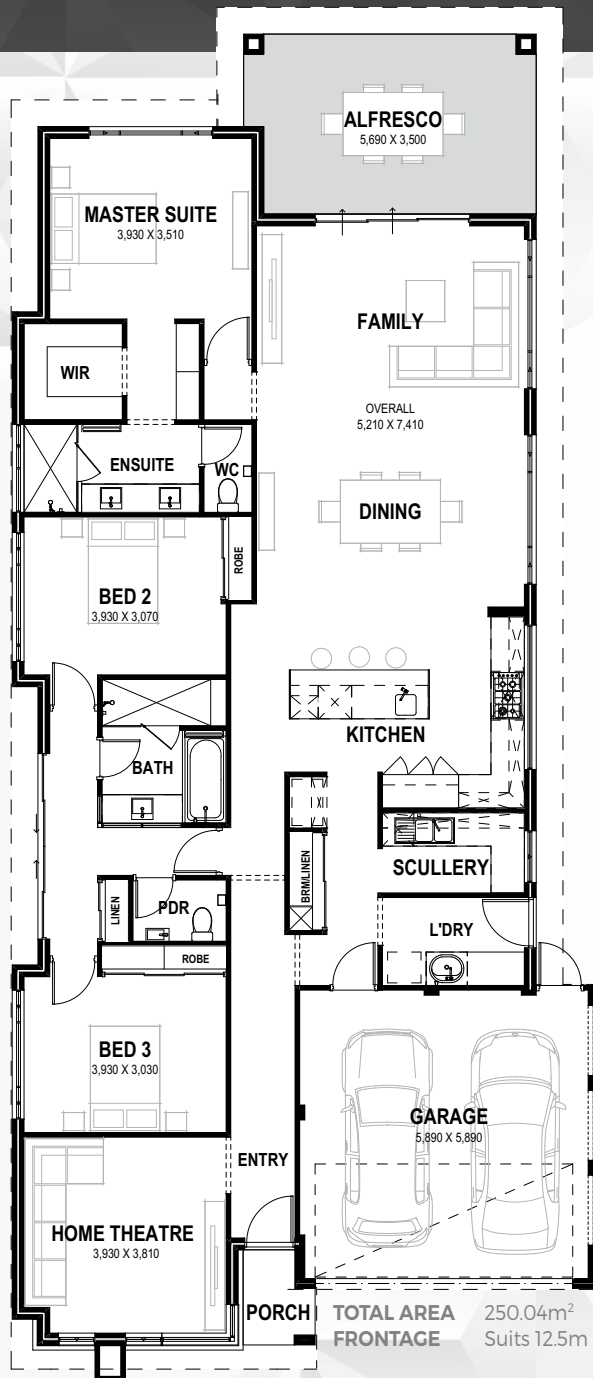


2



12.5

DIAMOND
SERIES



Contemporary Luxe living at its finest, the Santana is a well thought out stylish home with three bedrooms, two bathrooms and a theatre room.

Designed to maximise functionality the central open plan kitchen and scullery seamlessly integrates with the dining and family area as well as the rest of the home.

INCLUSIONS

- ◆ Ducted reverse cycle air conditioning
- ◆ 31c high ceilings to living and alfresco
- ◆ Internal brick wall with drywall lining system
- ◆ Feature recess ceiling to home theatre or master bedroom
- ◆ 1200mm wide front entry door if applicable
- ◆ Silestone benchtops throughout
- ◆ 900mm Bosch or Ilve kitchen appliances
- ◆ Overhead cupboards to kitchen
- ◆ Semi framed shower doors and screen with hobless shower
- ◆ Polished edge slimline frame mirror over vanities
- ◆ Inset trough to laundry
- ◆ NBN structured cabling package and 10 LED downlights



9263 4450 | endeavourhomes.com.au

Images for illustration purposes only

ENDEAVOUR
HOMES